



SRA-166FB/SRA-166FC

FREQUENCY COUNTER PLUS EXTENSION SPEAKER FOR TRANSCEIVER RADIO

OWNER'S MANUAL

We recommend an extension speaker for transceiver radio. The SRA-166FB/FC is a high quality speaker made of durable long lasting material with excellent audio output. Just plug it in the back of almost any transceiver radio and you will get the sound you want where you want it. Frequency counter is a universal frequency counter which indicates the frequency of the selected channel. It is design for use in CB and Amateur radios.

CB RADIO

DX-919,DX-929, DX-929B, DX-949, DX-979, ,DX-979B, TR-396, TR-399WX,
TR-696, TR-699WX. CX-366CE.

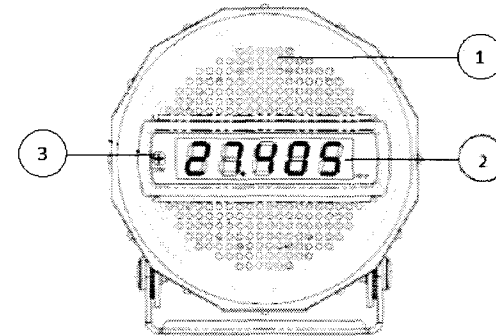
AMATEUR RADIO :

MIRAGE MX-36HP,MIRAGE MX-36HP2,MIRAGE MX-86HP, MG-97,MG-98MKII,
DX-29HP ,DX-33HP2 ,DX-44HP, DX-47HP,CX-3300DS2, CX-3400HP, CX-3600HP, CX-4300HP,
CX-4400 TURBO,CX-4600 TURBO, CX-566SB,VR-94M PLUS, VR-95M PLUS,SS-3900EGHP,
GENERAL LEE(B).

SPECIFICATION

Nominal size	: 78mm, 3 inch
Input	: Nominal power 12 W
Maximum Power	: 15 Watt
Impedance	: 4 ohms
Magnet Size	: 60*32*10 MM
Plug Type	: 3.5mm
Wire Length	: 2 meter
Display counter	: Blue light
Dimmer Control	: Manually to adjust the brightness.
Accessories	: Mounting Bracket and Screw

PIC OF FRONT SPEAKER:



1. SPEAKER:

The extension speaker should have 4 ohms impedance and be able to handle at least 12 watts. When the extension speaker is plugged in, the internal speaker is disconnected.

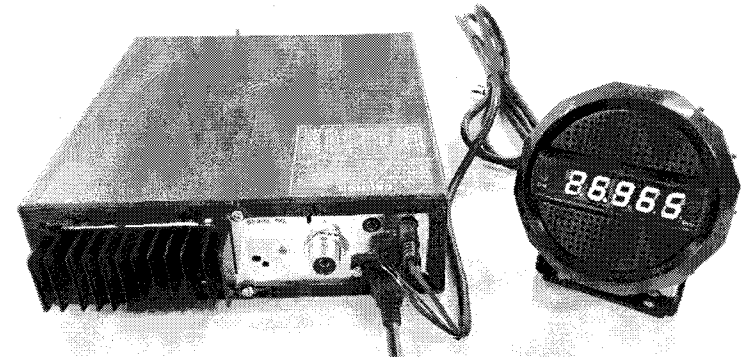
2. FREQUENCY COUNTER:

This blue illuminated display indicates the frequency of the selected channel.

3. DIMMER:

This knob controls the level of brightness for the frequency digits. It can be control manually to adjust the brightness.

PIC OF CONNECTION:



The frequency counter jack has to connect to the SRA-166FB/FC, it will display blue illuminated indicates the frequency of the selected channel. Insert the audio plug SRA-166FB/FC into the public address speaker or external speaker transceiver ,so you can hear the sound.