

# SM415 | Mini Windshield, Dashboard, or Console Mount with Universal Cradle



## Package Contents:

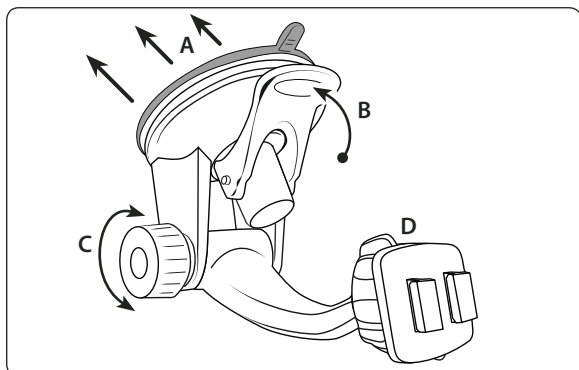
- (1) (1) GN014-SBH - Mini windshield swivel mount
- (1) SM040-2 - Universal phone cradle with adjustable feet
- (1) AP013 - Optional adhesive circular disc for dashboard or console
- (1) Alcohol cleaning pad



Do not place mount in or near an air bag deployment zone or where it will obstruct view of the road.

## Windshield Mounting

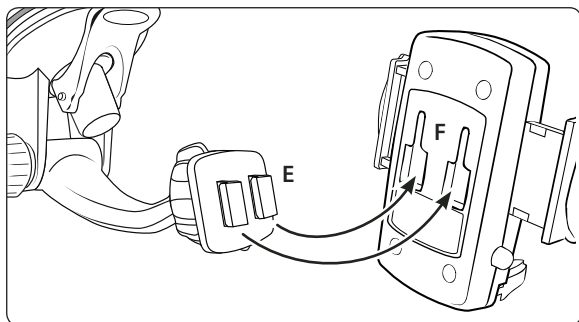
- Step 1. Find a safe location on the interior of the vehicle's windshield to mount the pedestal. Firmly push the suction base (A) against the windshield and flip the base lever down (B) to the locked position. See diagram below.
- Step 2. Adjust the angle of the pedestal arm by tightening the angle adjustment knob (C) at the base to the desired angle.



- Step 3. Adjust the angle and rotation of the pedestal head by loosening the swivel-tightening ring (D).

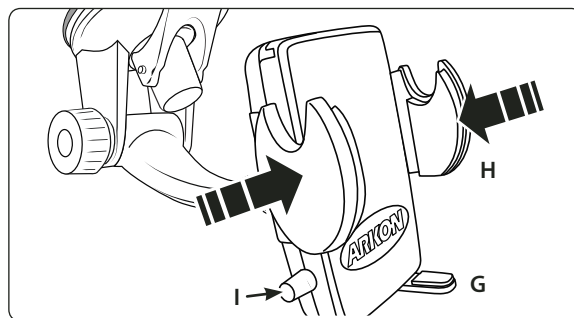
## Universal Cradle Attachment

- Step 1. Attach the cradle to the dual T-head by inserting the dual T-tabs (E) into the dual T-slots (F) on the back of the cradle.



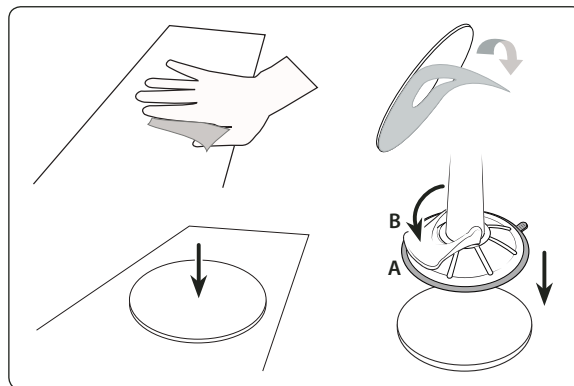
## Device Insertion and Removal from Cradle

- Step 1. Place the phone or device into the cradle with the device sitting on the adjustable support legs (G). Clamp the grip arms (H) inward to firmly grasp the device. Press the release button (I) to open the arms.



## Dash or Console Mounting (Optional)

- Step 1. Find a safe location on the dash or console. Use the included alcohol pad to clean the mounting surface if necessary. Remove the paper backing on the adhesive disc and firmly press in place. Let cure for 24 hrs. before applying mount.
- Step 2. Place the pedestal's suction base (A) over the center of the circular disc. While firmly holding the pedestal on top of the disc, flip the base lever down (B) to the locked position.



## Safety Precautions

Do not install Arkon products over an air bag cover or within the air bag deployment zone. Arkon Resources, Inc. assumes no responsibility of liability for injury or death as a result of car crashes and/or air bag deployment.

Arkon is not responsible for any damages caused to your car, your device, or yourself due to the installation or use of this pedestal mount.

**ARKON**  
RESOURCES INC.

The Mobile Mounting Specialists™

Consumer Hotline:

USA (800) 841-0884

INT'L (626) 254-9005

Monday - Friday 9am - 5pm, PST

[www.arkon.com](http://www.arkon.com)

Arcadia, CA 91006 USA

Designed in USA | Made in Taiwan

© Copyright 2010 Arkon Resources, Inc.