

1 Find a Location for Onyx Plus and Mount it

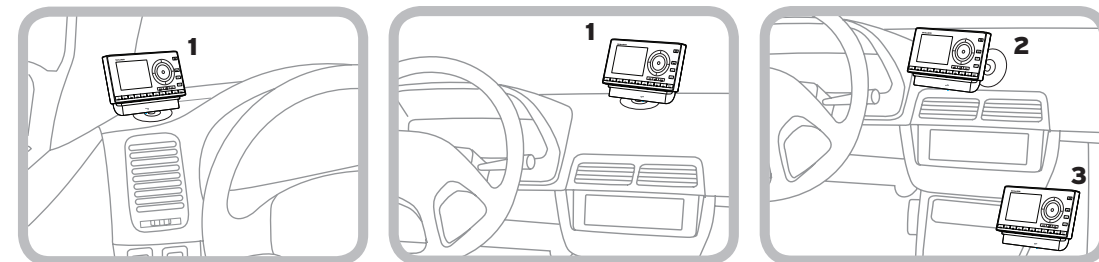
Select either the **Dash Mount** method or the **Vent Mount** method for your Onyx Plus. You will need a phillips-head screwdriver to complete the installation.

IMPORTANT! To make the cable connections easier, wait until after you have connected all the cables to the dock before you attach the dock to the dash or to a vent.

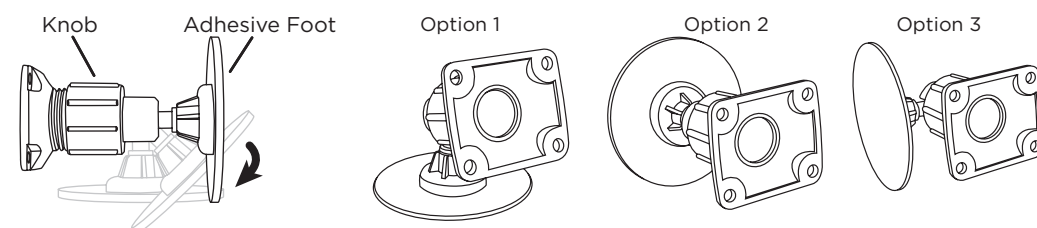
Dash Mount Method:

IMPORTANT! The air temperature needs to be at least 60°F to install the Dash Mount. If needed, turn on the heater in your vehicle.

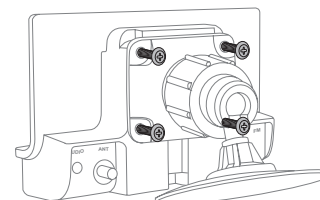
A. Select a flat surface for the Dash Mount with ample room for Onyx Plus. Avoid mounting on leather surfaces. Choose a location that doesn't interfere with the driver's vision or access to driving controls, one that won't interfere with the deployment of airbags or other safety equipment, and makes Onyx Plus easily accessible for operation. (Airbag locations are typically marked with "SRS" logos.)



B. Orient the adhesive foot so that Onyx Plus is easily accessible. Loosen the knob and adjust the adhesive foot to position **1, 2, or 3**, and then tighten it.

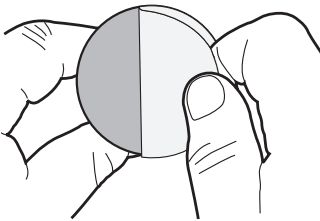


C. Attach the Dash Mount to the *PowerConnect* Vehicle Dock using the 4 provided screws.



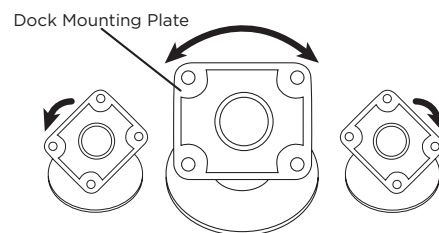
D. Before you attach the Dash Mount to the dash, skip ahead and finish the remainder of the vehicle installation so that the cables are attached to the dock.

E. Once the cables have been attached to the dock, clean the mounting surface in the vehicle with the alcohol preparation pad and let it dry thoroughly.



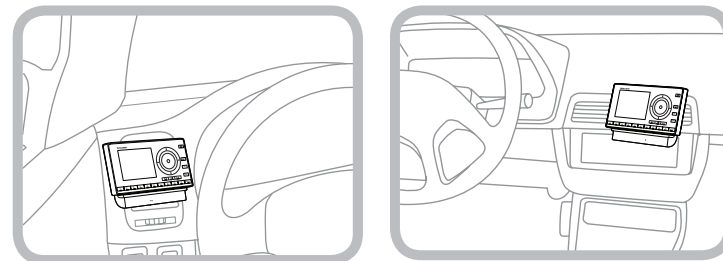
F. Once the surface is dry, remove the adhesive liner. Press and hold the Dash Mount in place for 30 seconds. Allow the adhesive to cure for 2-4 hours.

G. You can tilt the dock mounting plate in your preferred direction.



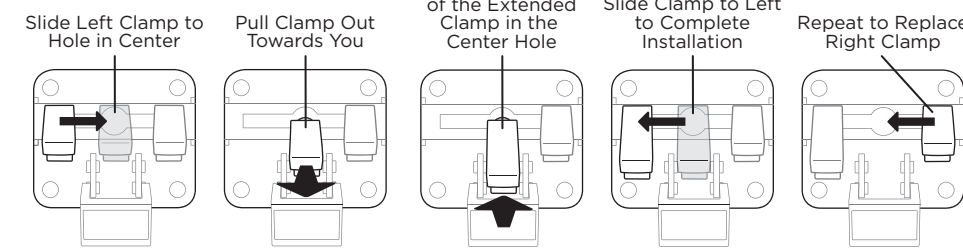
Vent Mount Method:

A. Select a vent with ample room for Onyx Plus, one that won't interfere with the deployment of airbags or other safety equipment, and makes Onyx Plus easily accessible for operation. (Airbag locations are typically marked with "SRS" logos.)

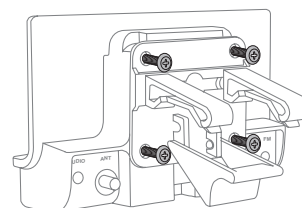


B. Some vents have recessed louvers. If yours are recessed, remove the regular vent clamps and install the extended vent clamps.

Vent Mount Rear View



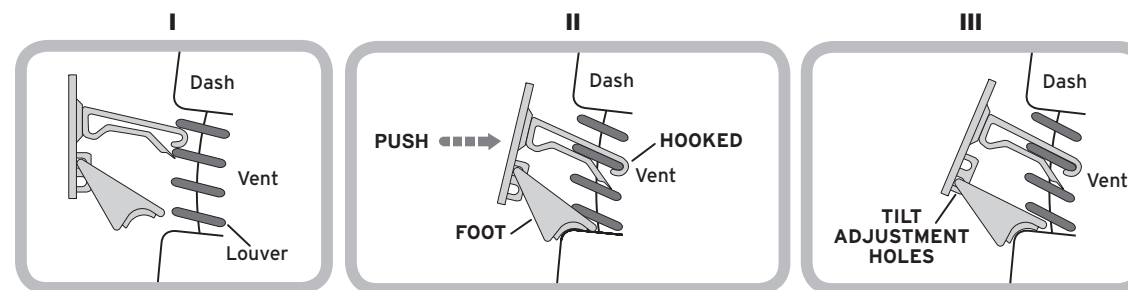
C. Attach the Vent Mount to the *PowerConnect* Vehicle Dock using the 4 provided screws.



D. Before you attach the Vent Mount to the vent, skip ahead and finish the remainder of the vehicle installation so that the cables are attached to the dock.

E. Once the cables have been attached to the dock, install the Vent Mount onto the vehicle vent. (Note that for clarity the illustrations below do not show the Vehicle Dock attached to the Vent Mount.)

- i.** Insert the vent mount into the vent opening.
- ii.** Push until hooked on the rear of the vent louver. Rest the foot against the bottom of the vent.
- iii.** If necessary, adjust the tilt of the Vent Mount by repositioning the foot to a different tilt adjustment hole.

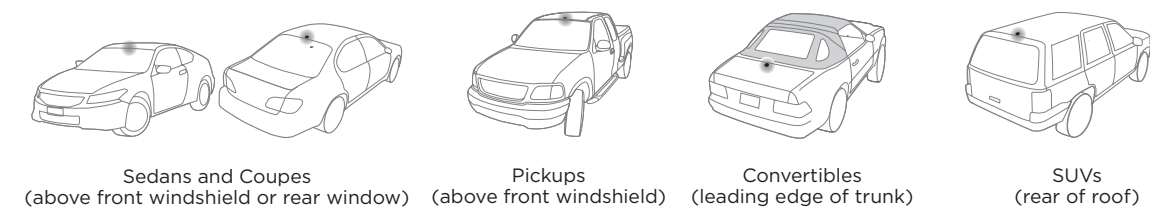


2 Mount the Magnetic Mount Antenna

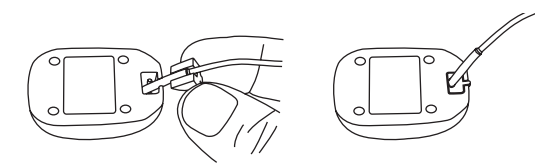
A. Mount the Magnetic Mount Antenna outside your vehicle, on a clean and dry horizontal surface that will always face the sky.



B. Choose the location for the antenna according to your type of vehicle. Center it between the left and right sides, and away from other antennas.



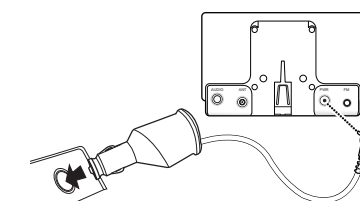
C. Install the Cable Routing Adapter to direct the antenna cable downward, if mounting on an edge.



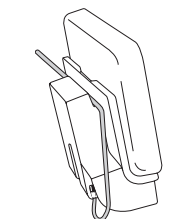
TIP: Use the Alcohol Prep Pad to clean the surface.

4 Connect the PowerConnect Power Adapter

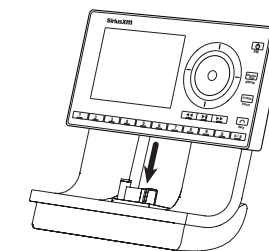
A. Insert the *PowerConnect* Power Adapter into your vehicle's cigarette lighter or power adapter socket. Plug the other end into the **red PWR** connector on the rear of the *PowerConnect* Vehicle Dock.



B. Use the wire guide on the top of the dock to organize the wires connected to the dock.

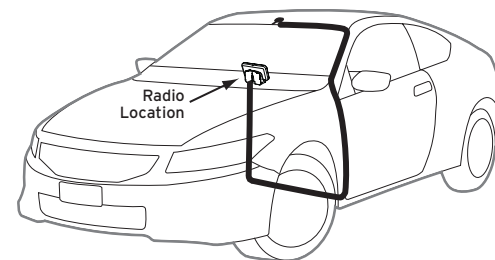


C. Place Onyx Plus into the dock and press the **Power** button.



3 Route the Antenna Cable

NOTE: These instructions are for a sedan or coupe where the antenna is mounted above the front windshield. The Onyx Plus User Guide (with Vehicle Kit) has detailed antenna cable routing instructions for all types of vehicles. Go to www.siriusxm.com/guides for the User Guide.



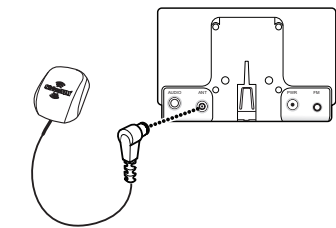
A. Tuck the antenna cable under the windshield rubber molding and run it to the nearest corner.

B. Route the cable out of the molding and into the rubber weather stripping around the door opening.

C. Lift the weather stripping. Tuck and run the cable inside it to the bottom of the door opening. Replace the weather stripping.

D. Pull the cable out and route it to Onyx Plus.

E. Plug the Magnetic Mount Antenna connector into the silver **ANT** connector at the rear the *PowerConnect* Vehicle Dock.

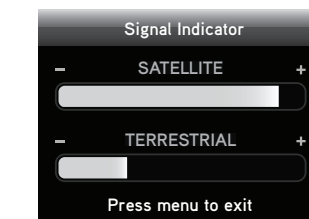


TIP: Include enough slack in your routing to accommodate open doors or the hood lid. Coil any excess cable in a hidden location and keep it away from any vehicle pedals or controls.

5 Verify Signal Reception

A. Be sure the vehicle is outside and the antenna has a clear view of the sky.

B. Verify that you are receiving the XM signal. The Onyx Plus Radio should be tuned to XM channel 1, the XM Preview channel. There should be at least two bars on the lower left corner of the screen that denotes antenna signal strength. If not, be sure that you have mounted the antenna on the outside of the vehicle, as shown in step 2, and that the vehicle is parked outdoors with a clear view of the sky. Move the vehicle away from any obstructed area, for example, if you are parked in a garage, or parked near a large structure.



C. You can also press **menu** and then press **down** to scroll to and highlight **Signal Indicator**. Press the **Select** button. The Satellite and Terrestrial bars show the strength of the signal being received. If the signal reception is good, press and hold **menu** to return to XM channel 1, the XM Preview channel.



ONYPX PLUS QUICK START GUIDE



Self installation instructions and tips are provided for your convenience. It is your responsibility to determine if you have the knowledge, skills and physical ability required to properly perform an installation. SiriusXM shall have no liability for damage or injury resulting from the installation or use of any SiriusXM or third party products. It is your responsibility to ensure that all products are installed in adherence with local laws and regulations and in such a manner as to allow a vehicle to be operated safely and without distraction. SiriusXM product warranties do not cover the installation, removal or reinstallation of any product.

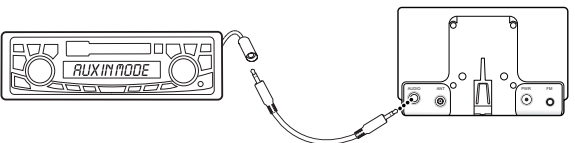
Sirius XM Radio Inc.
1221 Avenue of the Americas
New York, NY 10020
siriusxm.com
1.866.635.2349

© 2013 Sirius XM Radio Inc.
SXP1L1V1GSG 130724a

6 Connect the Audio

Decide on one of the following in-box audio connection options. You can also refer to "Connect the Audio" in the Onyx Plus User Guide (with Vehicle Kit) for additional audio connection options, such as a cassette adapter or the FM Direct Adapter (FDMA) (both sold separately). Go to www.siriusxm.com/guides for the User Guide.

Option 1: Best: Use the provided **Aux In Cable**, if your vehicle's stereo system has an auxiliary input jack.

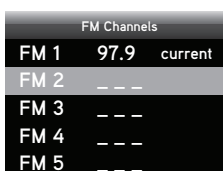
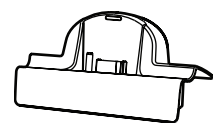


- Plug one end of the cable into the **green AUDIO** connector on the PowerConnect Vehicle Dock and the other end into the auxiliary input jack on the vehicle's stereo system.
- Turn on your vehicle's stereo system and set it to play from the auxiliary input source.
- You should hear XM channel 1 through your vehicle's stereo system.
- Go back to Step 1 "Find a Location for Onyx Plus and Mount It" on the opposite side and finish installing the Dash or Vent Mount. Then the installation is complete.

TIP! Refer to your vehicle's owner's manual to find the location of the auxiliary input jack, or consult the vehicle dealer.

Option 2: Good: Use the **PowerConnect** feature of Onyx Plus. PowerConnect plays the XM audio through your vehicle's FM radio.

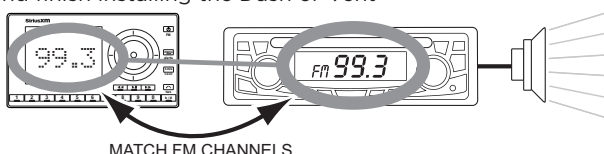
- Find and make a list of all available FM channels in your area that are not being used by an FM radio station.
- Pick the first FM channel on your list. Tune your vehicle's FM radio to this FM channel.
NOTE! If you are using the Vehicle Dock from the Universal Xpress Car Kit instead of the PowerConnect Vehicle Dock which came with your Onyx Plus, you will have to disable AUX Detect. Refer to "Using the Vehicle Dock From the Universal Xpress Car Kit" of the Onyx Plus User Guide (with Vehicle Kit), and complete the additional instructions before continuing with the next step. Go to www.siriusxm.com/guides. The audio connection will be through your vehicle's FM radio, but it is not PowerConnect.



- Set your Onyx Plus to transmit on the same FM channel that you have selected on your vehicle's FM radio:
 - Press **menu** and then press **down** ↓ to scroll to and highlight **FM Settings**. Press the **Select** button.
 - FM Channels** will be highlighted. If it is not highlighted, press down ↓ to scroll to and highlight **FM Channels**. Press the **Select** button.
 - Press **down** ↓ to scroll to and highlight **FM2**. Press the **Select** button.
 - Press **left** (←) or **right** (→) to tune in steps of .2, or press **up** ↑ or **down** ↓ to tune in steps of 1 to select the available FM channel you have chosen. Press the **Select** button to select the FM channel.
 - Start Using** will be highlighted. Press the **Select** button.
 - The selected FM channel will be confirmed on the display screen. Press and hold **menu** to return to the main display screen.

D. You should hear XM channel 1 through your vehicle's FM radio. If you are satisfied with the sound quality, go back to Step 1 "Find a Location for Onyx Plus and Mount It" on the opposite side and finish installing the Dash or Vent Mount. Then the installation is complete.

- If you are not satisfied, move to the next FM channel on your list and repeat the process. Continue until you have found an FM channel with which you are satisfied.



7 Subscribe

You can follow either the general activation and subscription process or use the on-board activation guide to activate your Onyx Plus and subscribe to the XM service.

General activation and subscription process:

- Make sure your Onyx Plus is turned on, receiving the XM signal, and tuned to XM channel 1 so that you can hear XM audio.
- Make a note of your XM Radio ID. You can find it by selecting **Radio ID** in menu items, by tuning to channel 0, on a label on the bottom of the gift box, and on the label on the back of your Onyx Plus.

NOTE! The XM Radio ID does not use the letters I, O, S, or F.

- To subscribe:
 - Online: Go to www.siriusxm.com/activatenow to access or set up an online account, subscribe to the service, and activate your Radio.
 - OR
 - By phone: Call **1-866-635-2349**.



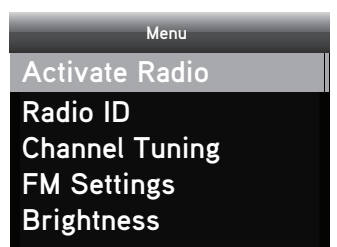
*The phone number shown above may differ from the one shown on your Onyx Plus. All numbers are valid.

Activation usually takes 10 to 15 minutes after you have completed the subscription process, but may take up to an hour. We recommend that your Radio remain on until subscribed. Once subscribed, the Radio will receive and you can tune to the channels in your subscription plan.

Press **up** ↑ or **down** ↓ to tune to other channels, and **left** (←) or **right** (→) to browse the different categories of channels. Learn what all the buttons do in the panel below.

Activation guide:

For your convenience, Onyx Plus has an on-board activation guide. You can activate your radio and subscribe to the XM service by using this guide, where you will be guided step-by-step through the subscription process. To access and use the guide, simply follow these steps:

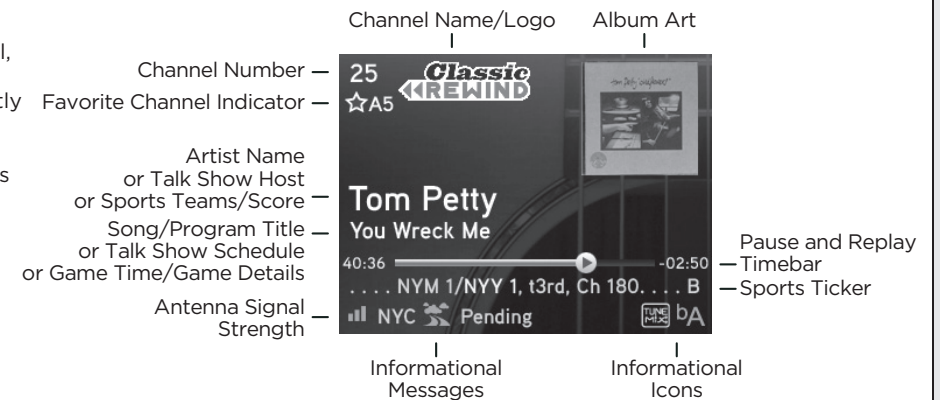


- Turn Onyx Plus on and press the **menu** button.
- Activate Radio** will be highlighted. Press the **Select** button.
- Follow the directions on each successive screen until you complete the subscription process.

Onyx Plus Main Display

When listening to a channel, information about the channel and what is currently playing is displayed.

The Onyx Plus User Guide is available at www.siriusxm.com/guides.



Specifications

System	Power Requirements: 9-16 V DC, 500 mA (max) Operating Temperature: -4°F to +140°F (-20°C to +60°C) Audio Output: 1.0 V _{rms} (max)	PowerConnect Power Adapter	Dimensions: 3.7 in (W) x 1.7 in (H) x 1.3 in (D) 94 mm (W) x 43 mm (H) x 34 mm (D) Weight: 2.4 oz (69 g) Input / Output: 9-16 V DC / 5 V DC, 1.5 A Cable Length: 4 ft 7 in (1.4 m)
Onyx Plus Radio	Dimensions: 4.5 in (W) x 2.4 in (H) x 0.7 in (D) 115 mm (W) x 63 mm (H) x 17 mm (D) Weight: 3.4 oz (96 g)	Vehicle Antenna	Type: XM Magnetic Mount Connector: SMB female, right angle Cable Length: 23 ft (7.0 m)
PowerConnect Vehicle Dock	Dimensions: 4.0 in (W) x 2.4 in (H) x 1.2 in (D) 102 mm (W) x 61 mm (H) x 31 mm (D) Weight: 1.6 oz (46 g) Audio Connector: 1/8 in (3.5 mm) female Antenna Connector: SMB male	Aux In Cable	Connectors: 1/8 in (3.5 mm) stereo male to 1/8 in (3.5 mm) stereo male Cable Length: 4 ft (1.2 m)

Important Legal Information

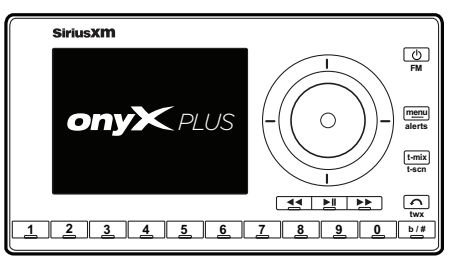
© 2013 Sirius XM Radio Inc. "Sirius", "XM" and all related marks and logos are trademarks of Sirius XM Radio Inc. and its subsidiaries. "BBC" and "Radio One" are trademarks of the British Broadcasting Corporation and are used under license. BBC logo © BBC 1996. Radio 1 logo © BBC 2001. Cosmopolitan® is a registered trademark of Hearst Communications, Inc. Elvis Radio logo © EPE Reg. U.S. Pat. & TM Off. IndyCar (and Design) are registered trademarks of Brickyard Trademarks, Inc., used with permission. Major League Baseball trademarks and copyrights are used with permission of Major League Baseball Properties, Inc. Visit the official website at MLB.com. Games subject to availability and change and may not include all spring training games. All rights reserved. NASCAR® is a registered trademark of the National Association for Stock Car Auto Racing, Inc. The NBA identifications are the intellectual property of NBA Properties, Inc. and the respective NBA member teams. © 2013 NBA Properties, Inc. © 2013 NFL Properties LLC. All NFL-related trademarks are trademarks of the National Football League. NHL and the NHL Shield are registered trademarks of the National Hockey League. © NHL 2013. All NHL logos and marks and NHL team logos and marks depicted herein are the property of the NHL and the respective teams and may not be reproduced without the prior written consent of NHL Enterprises, LP. The Home Ice® channel is a registered trademark of XM Satellite Radio Inc. The Swinger Golfer logo is a registered trademark of PGA TOUR, Inc. Visit www.siriusxm.com/channel lineup for updates. All programming/channel lineup/XM service subject to change or preemption. All other marks and logos are the property of their respective owners. All rights reserved.

IMPORTANT NOTICE: REQUIRED SUBSCRIPTION
Hardware and subscription sold separately, and activation fee required. Other fees and taxes may apply. **Subscriptions governed by SiriusXM Customer Agreement; see www.siriusxm.com.** Prices and programming are subject to change. **Service automatically renews into the subscription Package you chose (which may differ from the Package which arrived with the Radio), for additional periods of the same length, and automatically bills at the then current rates, after any complimentary trial or promotional period ends, until you call us at 1-866-635-2349 to cancel.** XM U.S. Satellite service available only to those at least 18 years of age in the 48 contiguous USA and DC, while SiriusXM Internet Radio is available throughout our satellite area and also AK, HI and PR.

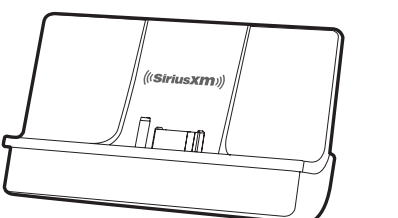
FCC Statement: The user is cautioned that changes or modifications not expressly approved by Sirius XM Radio Inc. can void the user's authority to operate this device. This device complies with Part 15 of the FCC Rules. Operation is subject to the following two conditions: 1. This device may not cause harmful interference. 2. This device must accept any interference received, including interference that may cause undesired operation. This equipment has been tested and found to comply with the limits for a Class B digital device, pursuant to Part 15 of the FCC Rules. These limits are designed to provide reasonable protection against harmful interference in a residential installation. This equipment generates, uses, and can radiate radio frequency energy and, if not installed and used in accordance with the installation instructions, may cause harmful interference to radio communications. However, there is no guarantee that interference will not occur in a particular installation. If this equipment does cause harmful interference to radio or television reception, which can be determined by turning the equipment off and on, the user is encouraged to try to correct the interference by one or more of the following measures: •Reorient or relocate the receiving antenna of the affected receiver. •Increase the separation between the SiriusXM equipment and the affected receiver. •Connect the SiriusXM equipment into an outlet on a circuit different from that to which the affected receiver is connected. •Consult the dealer or an experienced radio/TV technician for help. WARNING! The FCC and FAA have not certified this Satellite Radio Receiver for use in any aircraft (neither portable nor permanent installation). Therefore, Sirius XM Radio Inc. cannot support this type of application or installation.

What's in the Box?

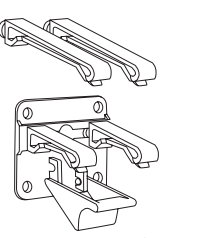
CAUTION: Do not attempt to install, activate, or adjust any of the setting options described in this Quick Start Guide unless your vehicle is parked in a safe location.



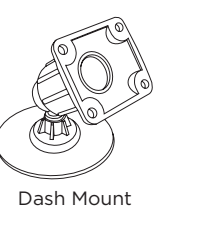
Onyx Plus Radio



PowerConnect™ Vehicle Dock



Vent Mount and Extended Vent Clamps



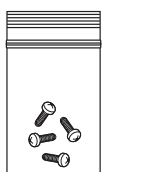
Dash Mount



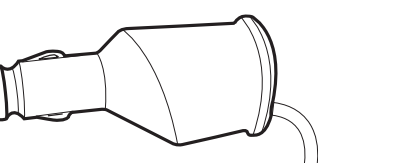
Antenna & Dash Mount Alcohol Preparation Pads



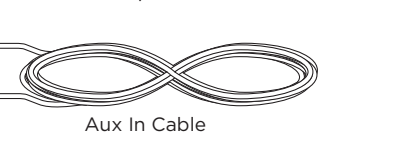
Cable Routing Adapter



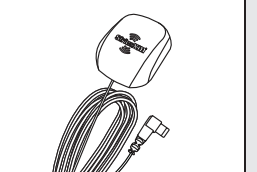
Screws (4)



PowerConnect Power Adapter



Aux In Cable



Magnetic Mount Antenna