



# Instruction Manual

IPO SERIES - IN-CAB POWER OUTLET SYSTEM  
15 A / 1800 W

## Models / Part Numbers

IPO20 / TUN650001

IPO30 / TUN650002

IPO40 / TUN650003

## For your safety

- Read this manual before installation
- For truck use only
- For interior use only



## Warning



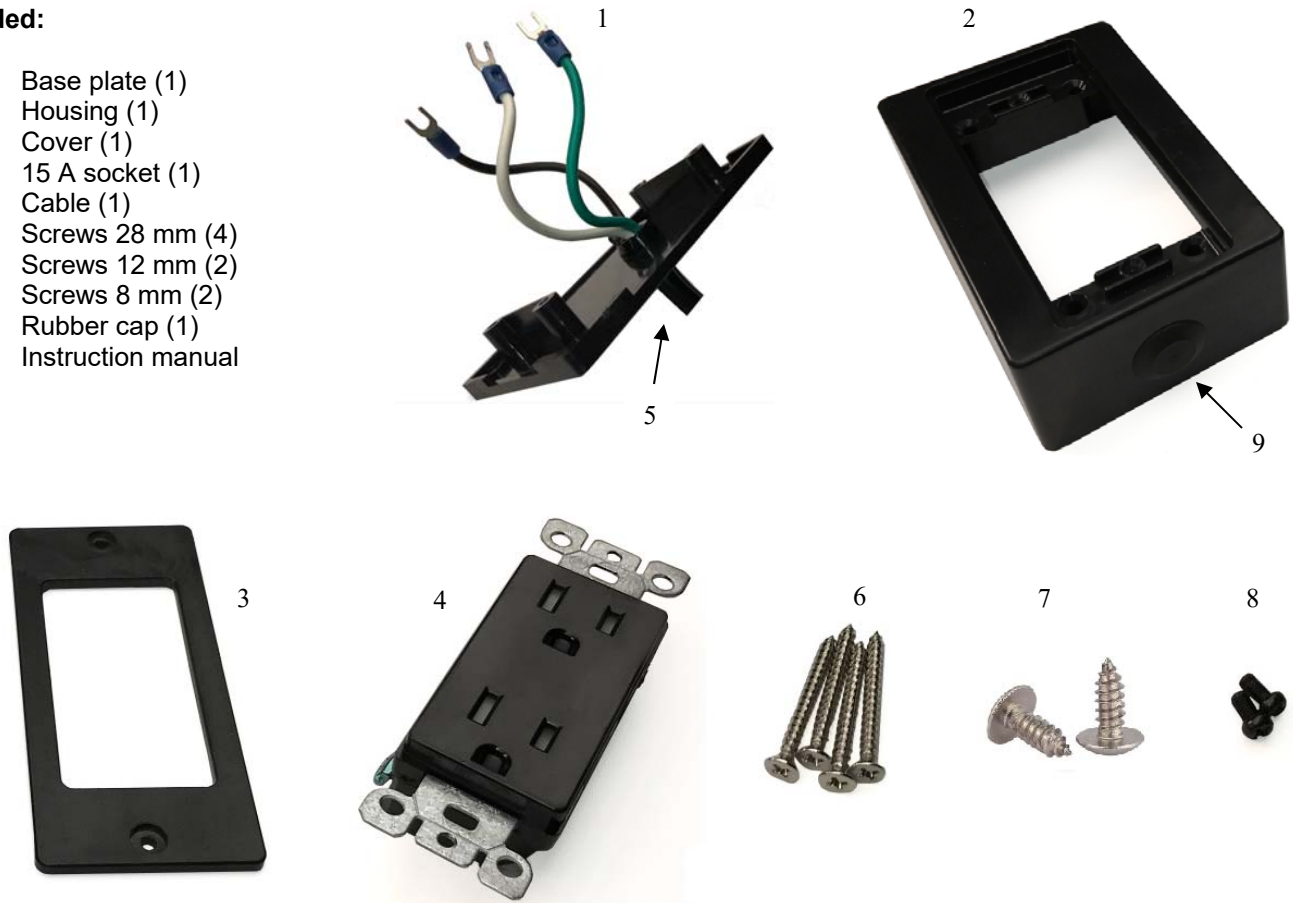
1. Tundra 120 V power outlets **MUST** be installed and used with the utmost care. All the installation steps included in this manual must be carefully understood and followed for your safety and that of others.
2. The electric current supplied by a power inverter is highly dangerous and may cause severe injury. If you don't have the required knowledge and skills, contact a licensed electrician.
3. The electrical code varies depending on location and the type of installation. Electrical installations should be performed by a licensed electrician in order to meet local and national wiring codes. Tundra International is not liable for any incidental, consequential or other damages arising from illegal or inadequate installation of this product including, without limitation, damages resulting from loss of use, cost of removal, installation, or troubleshooting. All Tundra product specifications are subject to change without notice.

## PARTS LIST

---

### Included:

- 1- Base plate (1)
- 2- Housing (1)
- 3- Cover (1)
- 4- 15 A socket (1)
- 5- Cable (1)
- 6- Screws 28 mm (4)
- 7- Screws 12 mm (2)
- 8- Screws 8 mm (2)
- 9- Rubber cap (1)
- 10- Instruction manual



**Note:** Bolts for securing the base plate to the vehicle are not included.

## CONTENTS

---

SECTION 1:	PERMANENT INSTALLATION – RECESSED CABLE	p. 3–4
SECTION 2:	PERMANENT INSTALLATION – SURFACE MOUNT CABLE	p. 5–6
SECTION 3:	CONNECTION TO THE INVERTER	p. 7

## SECTION 1: PERMANENT INSTALLATION – RECESSED CABLE

---

The cable is factory installed for recessed cable installation. For a surface installation, please proceed to PAGE 5 of this manual.

### INSTALLATION STEPS

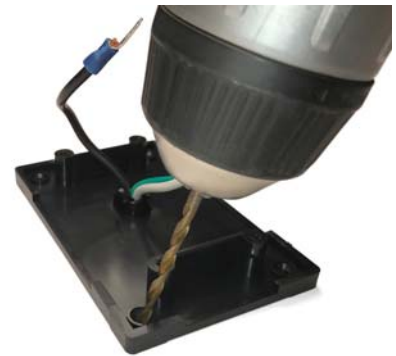
1. Determine where you want to install the AC outlet.  
Its location must meet the following criteria:
  - a) No risk of contact with liquids
  - b) Allow for at least 6 inches from the truck floor
  - c) The surface must be solid and flat
  - d) There is no cable or hose behind the power outlet that could be damaged during installation



2. At the selected location, drill a 1 1/4" hole using a hole saw.



3. Insert the cable through the hole, making sure to centre the cable in the 1 1/4" hole, then drill 4x 5/32" fixing holes.



4. Secure the base plate using #8 bolts and self-locking nuts.

Be careful not to over-tighten so as not to crack the base plate.

5. Install the housing using the four 28 mm screws included.



6. Install the 15 A socket, observing proper polarity.

Gold screw – black / line (+)  
Silver screw – white / neutral (-)  
Green screw – green / ground



7. Install the AC socket onto the housing using the two 12 mm screws included. Be sure to centre the receptacle.



8. Install the cover plate using the 8 mm screws included.

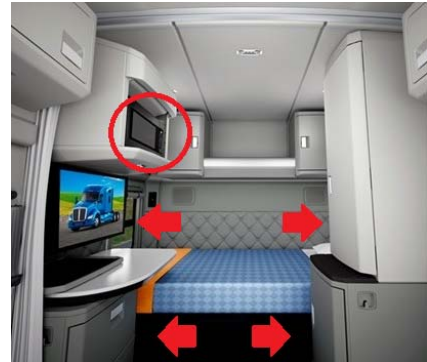


## SECTION 2: PERMANENT INSTALLATION – SURFACE MOUNT CABLE

For a FULL surface mount installation, follow the steps below.

### INSTALLATION STEPS

1. Determine where you want to install the AC outlet. Its location must meet the following criteria:
  - a) No risk of contact with liquids
  - b) Allow for at least 6 inches from the truck floor
  - c) The surface must be solid and flat
  - d) There is no cable or hose behind the power outlet that could be damaged during installation



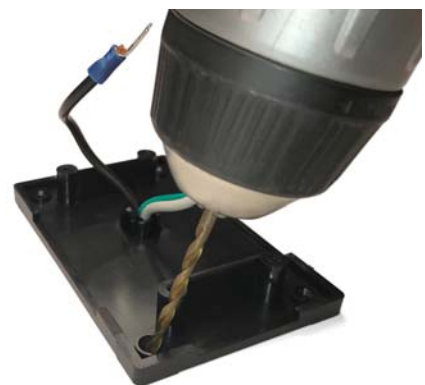
2. Remove the cable from the base plate using long-nose pliers.
3. Remove the rubber cap from the housing and install it on the base plate.



4. Insert the cable in the housing.



5. Using the base plate as a template, drill 4x 5/32" fixing holes.



6. Install the 15 A socket, observing correct polarity.

Gold screw – black / line (+)  
Silver screw – white / neutral (-)  
Green screw – green / ground



7. Install the AC socket onto the housing using the two 12 mm screws included. Be sure to centre the receptacle.



8. Install the cover plate using the 8 mm screws included



## SECTION 3: CONNECTION TO THE INVERTER

---

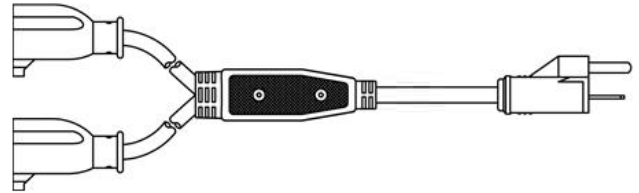
### INSTALLATION STEPS

1. Connect the power outlet cord to the output receptacle of your inverter.

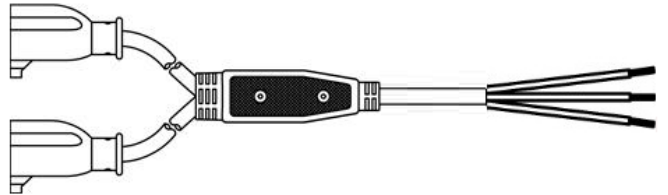


2. To connect more than 3 power outlets, we offer two options.

**Y Cord – NEMA plug / 15 A – 1800 W**  
Model: IPOYN / PN. TUN650004



**Y Cord – Hard wire only / 15 A – 1800 W**  
Model: IPOYH / TUN650005



### SPECIFICATIONS

---

RATINGS: 120 V / 15 A / 1800 W  
INPUT PLUG: NEMA 5/15P  
OUTPUT RECEPTACLE: NEMA 5/15R DUPLEX  
ENCLOSURE: PC PLASTIC  
POWER CORD: 14/3 AWG SJOW  
CORD LENGTH: IPO20 – 2.0 m (78.5”) / IPO30 – 3.0 m (118.0”) / IPO40 – 4.0 m (157.5”)  
CERTIFICATIONS : CONFORMS TO UL 962A ET CSA C22.2#308 STANDARDS



## LIMITED WARRANTY

---

**TUNDRA INTERNATIONAL** warrants its products against defects in material or workmanship for a period of one (1) year from the date of purchase. This warranty applies to the original purchaser (end user) of the product only. This limited warranty is void if the unit is abused, modified, installed improperly or if there is a lack of maintenance. Tundra International is not liable for any incidental, consequential or other damages arising from the use, misuse or operation of this product, including, without limitation, damages resulting from loss of use, cost of removal, installation, or troubleshooting of the customer's electrical systems.

### **IMPORTANT NOTES**

1. The product must never have been abused or modified.
2. The product must never have been exposed to liquids, heavy dust or corrosive materials.
3. Shipping-related damages are not covered by the warranty.

**FOR TECHNICAL SUPPORT, CONTACT US AT  
450-649-2470 or 1-877-964-2582**

### **TO MAKE A CLAIM:**

1. A Warranty Form must be filled out by the merchant and/or end customer.
2. The merchant and/or end customer **MUST** contact us to get an RMA number.
3. Proof of purchase **MUST BE INCLUDED** with ALL returned products.
4. Returned products **MUST BE PROPERLY PACKED** to prevent shipping-related damages.
5. All defective products **MUST** be sent with all shipping charges **PREPAID**.
6. Returned products will be evaluated by our technical department where a decision will be made as to whether the product is covered by the warranty, and if it will be repaired, replaced or credited.



2041-A Leonard-De Vinci, Sainte-Julie, Quebec, Canada J3E 1Z2  
Tel: **450.649.2470 / 1.877.964.2582** Fax: **1.888.855.9834**