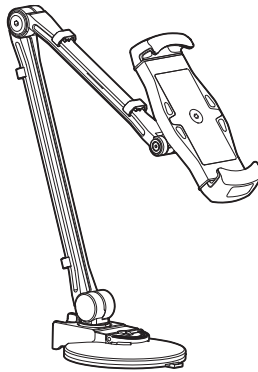




2-In-1 Tablet holder Wall Stand - Black/White



AP4-0015A





Key Features & Benefits

- Full motion articulating tablet/smartphone desktop mount frees you from holding the device to maximize your comfort while reading articles or watching videos
- Retractable holding bracket expands up to 8.2" with side openings allows easy device installing/removing and cable connection
- Fits most 7" to 12" tablets, including iPad, iPad Mini, iPad Air and Samsung Tab series
- Supports multi-direction 360° rotate, swivel, and tilt for the best ergonomic viewing position
- Articulating aluminum arm allows up to 13" height adjustment
- Includes both c-clamp and heavy-duty suction cup for easy and secure installation onto most surfaces without drilling. Convenient C-clamp knob accessible from the top for easy setup
- Protective pads fully integrated into device holder and clamp protects device from scratching, falling or slipping





Specifications

- Product weight: 1.10 lbs
- Device holder adjustment: 4.7" to 8.2"
- Loading weight capacity: ≤ 2.20 lbs
- C-clamp adjustment: 0.27" to 1.49"
- Full height (from base to center of holder): 18"

Package Contents

- 2-In-1 Tablet holder Wall Stand - Black/White
- C-clamp
- Suction cup
- Wire clip (x4)
- 3-in-1 allen key
- Installation Guide





Product Layout

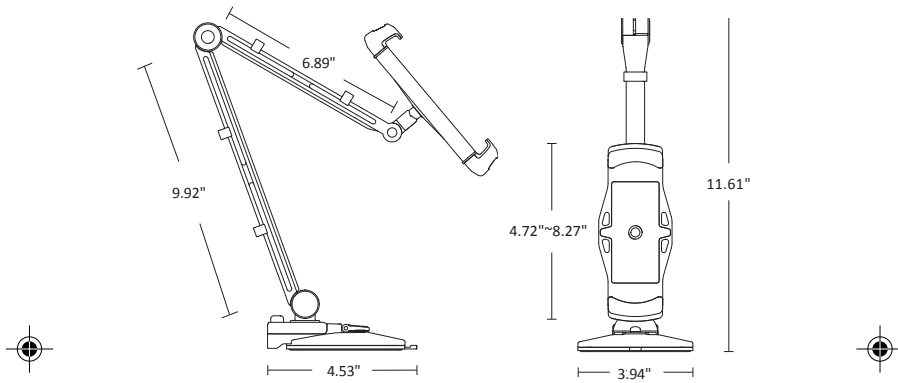
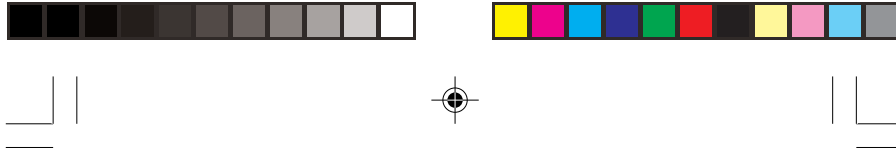


Figure 1: 2-In-1 Tablet holder Wall Stand





Installation Instructions

➤ C-clamp Mount

1. Position the C-clamp to the desktop and adjust it according to the thickness of the desktop by turning the clamp screw.
2. Tighten the C-clamp to the desktop by turning the clamp screw clockwise.

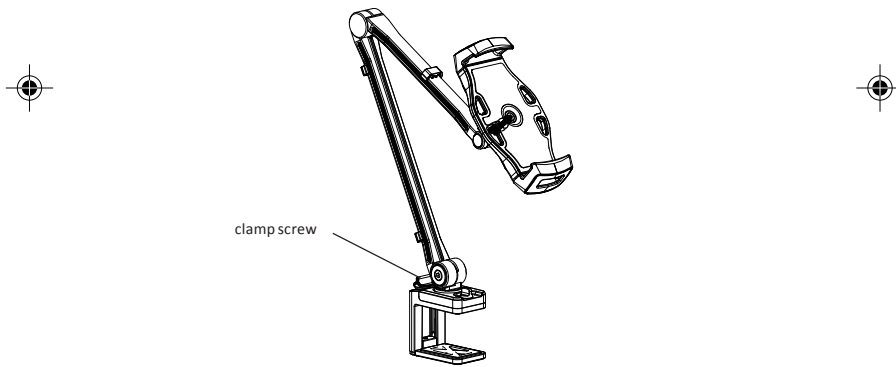


Figure 2



➤ **Suction Cup Mount**

1. Disconnect the *wall stand* from the C-clamp by releasing the bolt.
2. Connect the *wall stand* into the hole of suction cup.
3. Use the included bolt and fasten it.
4. Place the *wall stand* on a smooth flat surface and press the semi-circle locker to secure the mount.

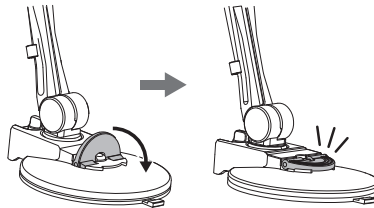


Figure 3





Adjustment & Cable Management

➤ Rotation

Adjust to the desired position using the included 3-in-1 allen key.

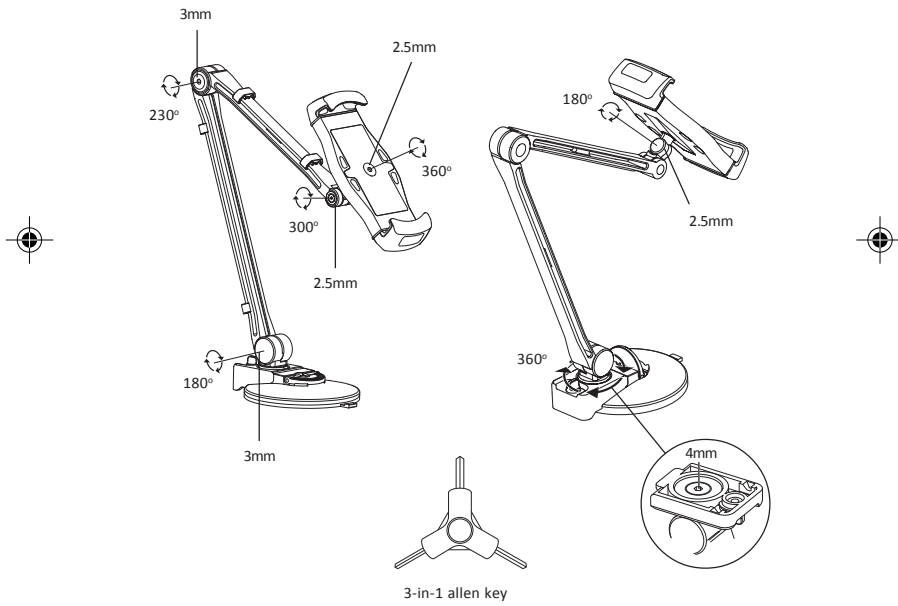


Figure 4





➤ **Device Holder**

Adjust the width to fit your tablet or smartphone.

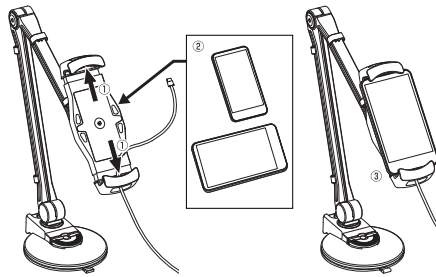


Figure 5



➤ **Cable Management**

Arrange the cables into the cable covers and down the tube using the included wire clips.

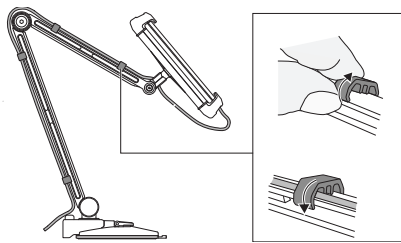


Figure 6





Maintenance

After a period of time, the suction cup will lose holding strength due to the accumulation of dirt and dust. It is recommended to remove and clean the suction cup with cold water every 2 months to maintain proper holding strength.

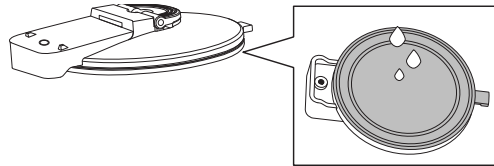
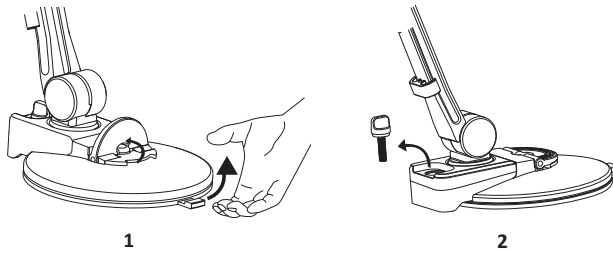


Figure 7





Notice

- DO NOT assemble/disassemble the *Wall Stand* by yourself
- DO NOT wash with hot water
- DO NOT place the suction cup on a rough surface or one prone to vibration or movement, as these conditions may cause the mount to fall unexpectedly
- Keep out of reach of children





Blank Page





Warranty Statement

This warranty covers the original purchaser and guarantees that the product be free of any defects in materials or workmanship for two (2) years from the date of product purchase.

Copyright Statement

2-In-1 Tablet holder Wall Stand - Black/White is a trademark of AVLT-Power Inc. All other trademarks are the property of their respective owners.



Lot Number

Please keep this LOT number for future product return, warranty or exchange.



--

Lot Number

Part Number

